

Specification

Model ONN-LED Freezer light

Specification ONN-X3P Series

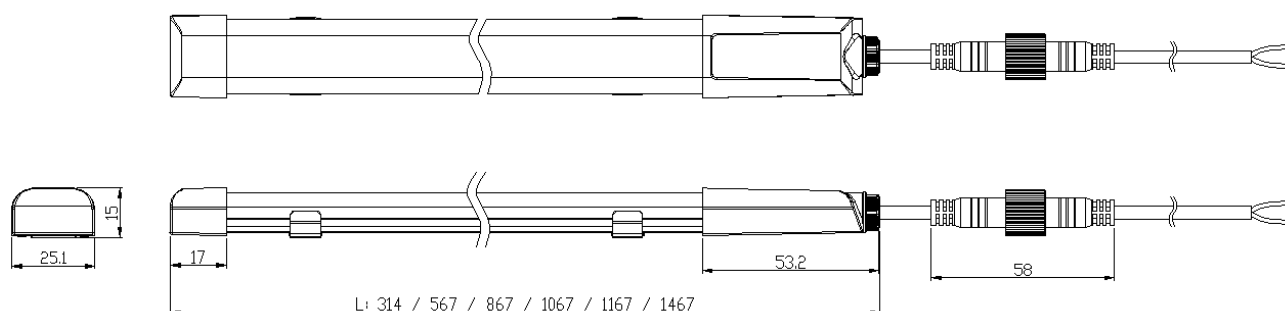
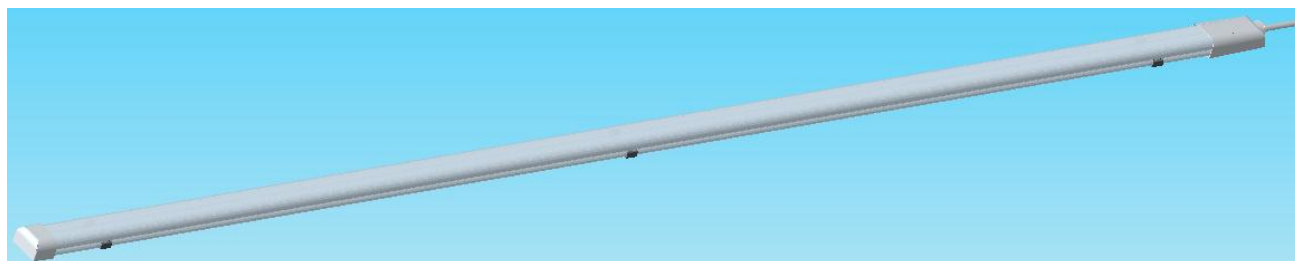
Version A0

Date 2017-03-15

Introduction:

1. X3E have all the advantages of led fixture like Energy saving, long lifespan, CCT dimmable, which is the inevitable trend.
2. Adopt high brightness SMD2835 LED chip, it features wider angle, low thermal resistance, Color area concentrated, low brightness decay with a long life span, best choice for light fixture.
3. No flash frequency, no electromagnetic radiation (even if the traditional meaning of the eye lamp can not be done), to avoid visual fatigue, more healthy than the eye protect lamp;
4. Ingress protection is up to IP65, safe to use.
5. Slim body, diversified installation method, easy and safe.

Picture and size:



Specification:

Model	Fitted input voltage					
□ONN-X3P-C1	AC220V (50/60Hz)					
□ONN-X3P-C2	AC220V (50/60Hz)					
□ONN-X3P-C3	AC220V (50/60Hz)					
Outer wire length	■ 约 0.8M(standard) □ _____.					
Installation	□ fixed by magnetic					
Lamp Length	□314mm	□567mm	□867mm	□1067mm	□1167mm	□1467mm
Power Cost	4.5W	7W	10W	12W	13.5W	16.5W
Input (Max)	35mA	50mA	80mA	95mA	105mA	125mA

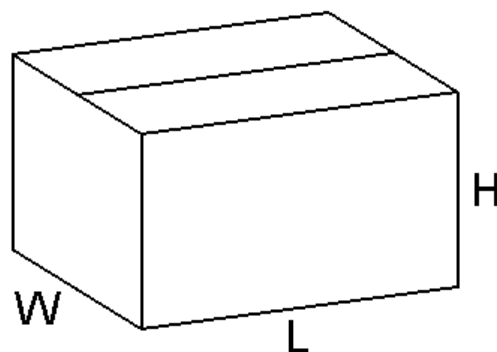
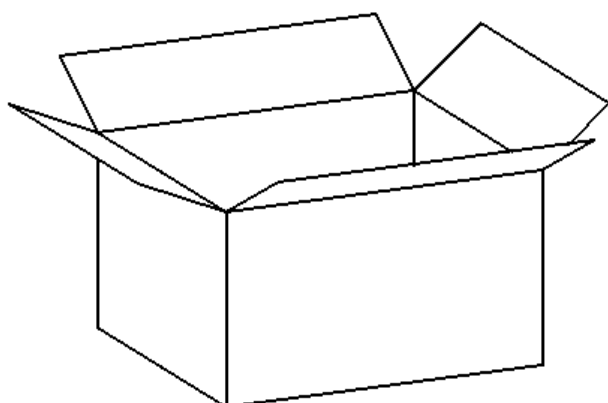
Luminous Flux(lm):	450±50	650±60	1000±100	1200±100	1350±100	1600±150
IP Rating:	IP65		Life span:		50 000H	
Light efficiency:	100Lm/W		CRI:		Ra>80	
Driver:	Non-isolated		PF:		>0.5	
Surface:	< 60°C		Beam Angle:		120°	

Working conditions:

Working temperature:	-20~45°C
Storage temperature:	-40~70°C
Working humidity:	10~90%
Storage humidity:	10~90%

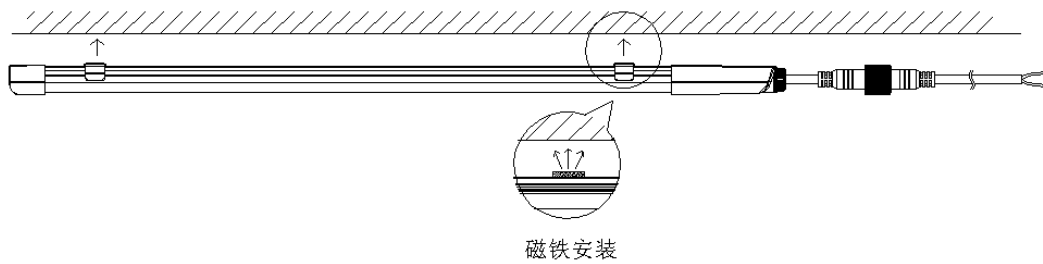
Packing information:

Package material	纸箱					
Lamp size (MM)	0.3M	0.6M	0.9M	1.1M	1.2M	1.5M
NW/PC (Kg)	0.05	0.08	0.11	0.13	0.14	0.17
GW/Cnt (Kg)	22.8	24	16.7	20	21.2	13.3
Qty / Cnt (PCS)	432	288	144	144	144	72
Foam size (L*W*H) mm	200x150x35 (J08-PEP)					
Carton size (L*W*H) mm	960*210*390	1300*225*390	960*210*390	1300*225*390	1300*225*390	1560*210*200

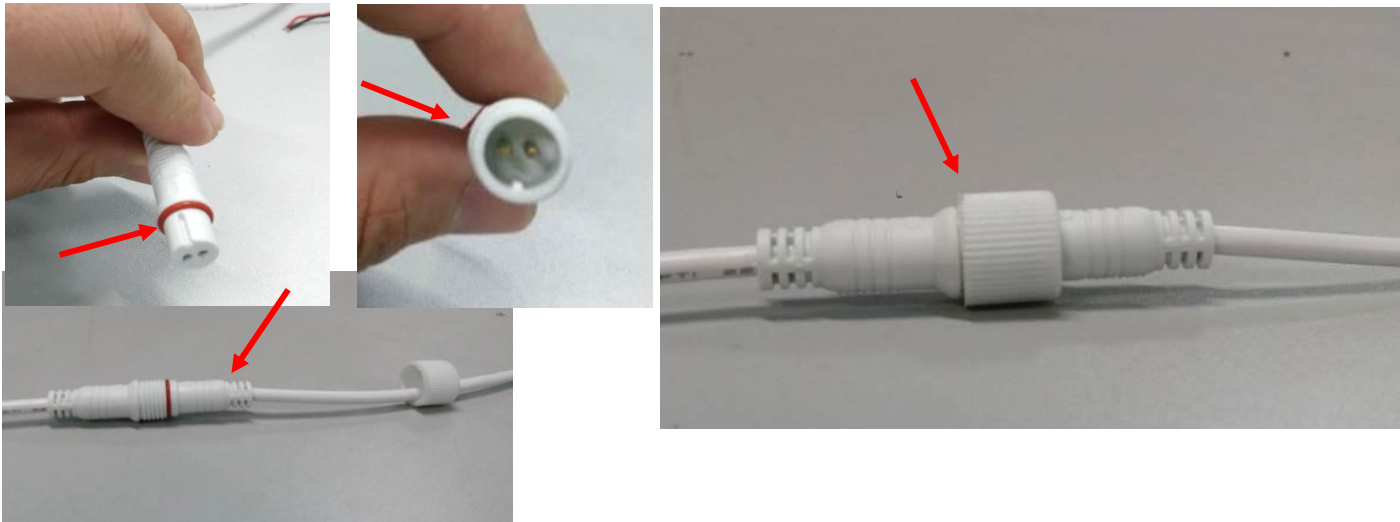


Installation

X3P easy to install , apply magnet mounting method, as long as the light near the iron plate, light automatic adsorption in the above, the permanent magnet, don't worry about the light will fall after a long time.



Detailed connector assemble steps:



Plug the male and female connector in right way, and then tighten the nut in central.

Repair Rule

The warranty of the products is 24 months. If broken in natural within the warranty, please bring invoice and date in the light to repair free. The following cases are not covered by the warranty, service charges paid by:

- (1) Altered fixture dates
- (2) The broken is because of improper use by user;
- (3) The body of light and bundled products is broken or lost can't warranty;
- (4) The broken reason is not natural, such broken by wrong input voltage and set up to lead to light can't work;
- (5) Dismantle and repair have not agree with factory, repair and alter by the other repair person not in authorized service station;
- (6) The broken is caused by fires, earthquakes, floods, lightning or other natural disasters, pollution and abnormal voltage.
- (7) Lights need to repair because rodents, salt spray, corrosion.

Exceed warranty period; repair will be charge fees as standard. Service charge = repair fees + material fees + freight fees.