

# Data Sheet

Name: Led freezer light

Model: ONN-X5R

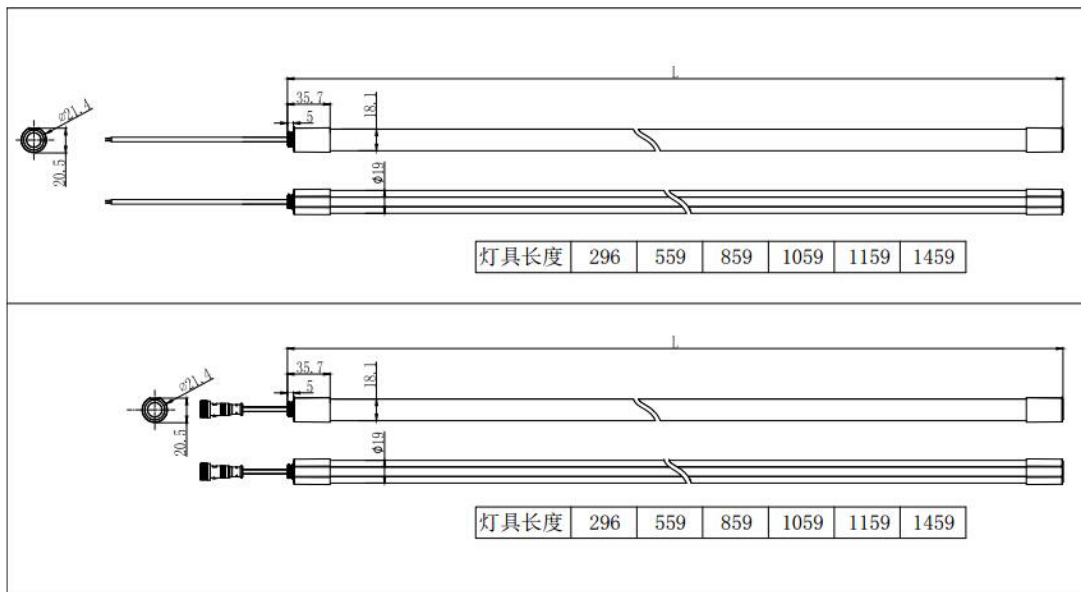
Launched Date: March,3<sup>rd</sup> 2017

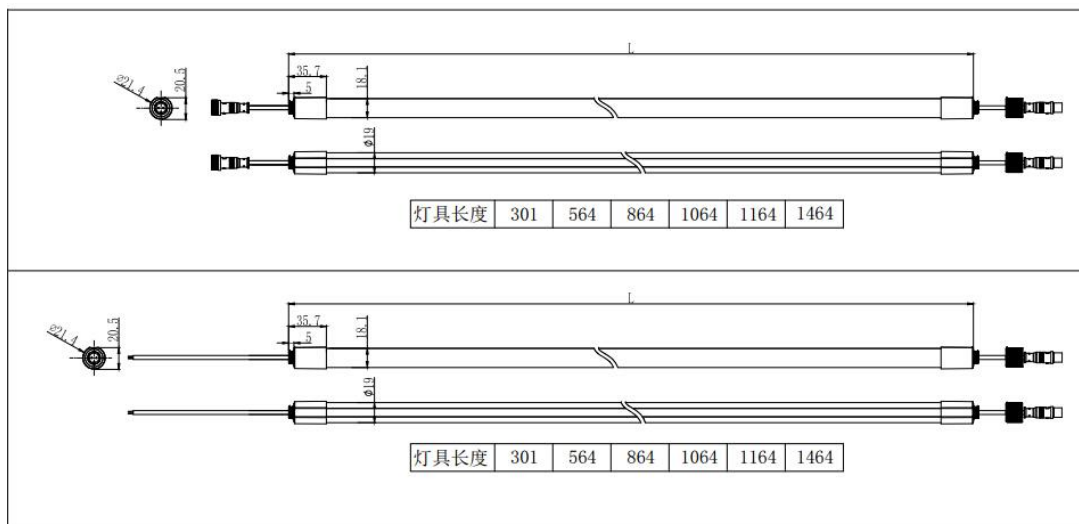
Version: V0

## Part 1: Descriptions

1. All vapor sealed, don't have to concern about the water drop or moisture formed by steam.
2. Adopt high brightness SMD2835 LED chip, it features wider angle, low thermal resistance, Color area concentrated, low brightness decay with a long life span, best choice for light fixture.
3. Ingress protection is up to IP65, safe to use.
4. Slim body, diversified installation method, easy and safe.

## Part 2: Dimensions





### Part 3: Specification

Model	Voltage input					CCT
ONN-X5R-C1	AC220V (50/60Hz)					5500-6000 K
ONN-X5R-C2	AC220V (50/60Hz)					4000-4500 K
ONN-X5R-C3	AC220V (50/60Hz)					2800-3200 K
Cable	0.8M (Standard)					
Mounting	1. by magnet 2. by clips					
Specification	300mm	573mm	873mm	1073mm	1173mm	1473mm
Power	4.5W	6.5W	10W	12W	13.5W	16W
Current input	35mA	50mA	80mA	95mA	105mA	125mA
Lumen	450±50L M	650±60L M	1000±100L M	1200±100L M	1350±100L M	1600±150L M
IP Rating	IP65		Lifetime		50 000H	
Lumen efficiency	95-100Lm/W		CRI		Ra > 80	
Driver	Non isolated		PF		0.5	
Surface temperature	< 60°C		Beam angle		120°	

#### Part 4: Working environment

Working temperature:	-20~45℃
Storage temperature:	-40~70℃
Working humidity:	10~90%
Storage humidity:	10~90%

#### Part 5: Package

Package	CARTON					
	0.3M	0.6M	0.9M	1.1M	1.2M	1.5M
Specification	0.3M	0.6M	0.9M	1.1M	1.2M	1.5M
Net weight(Kg)	0.1	0.16	0.22	0.28	0.32	0.39
Gross weight/carton	20.8	17.1	22.5	28.3	30.1	38.6
Qty/carton	192	96	96	96	96	96
Foam size(L*W*H) mm	200*200*15	200*200*15	200*200*15	200*200*15	200*200*15	200*200*15
Carton size(L*W*H)mm	660*210*200	660*210*200	960*210*200	1260*210*200	1260*210*200	1560*210*200

## Part 6: Mounting

### 1. Magnet Mounting

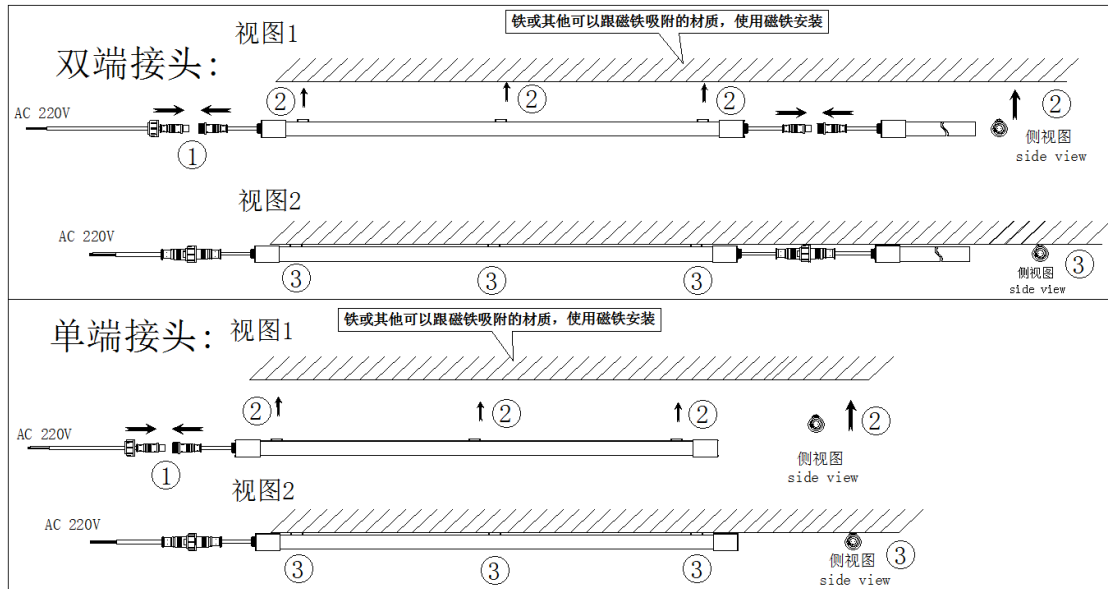
The surface should be iron material.

Plug the male connector; tighten the nut like picture 2 shows.

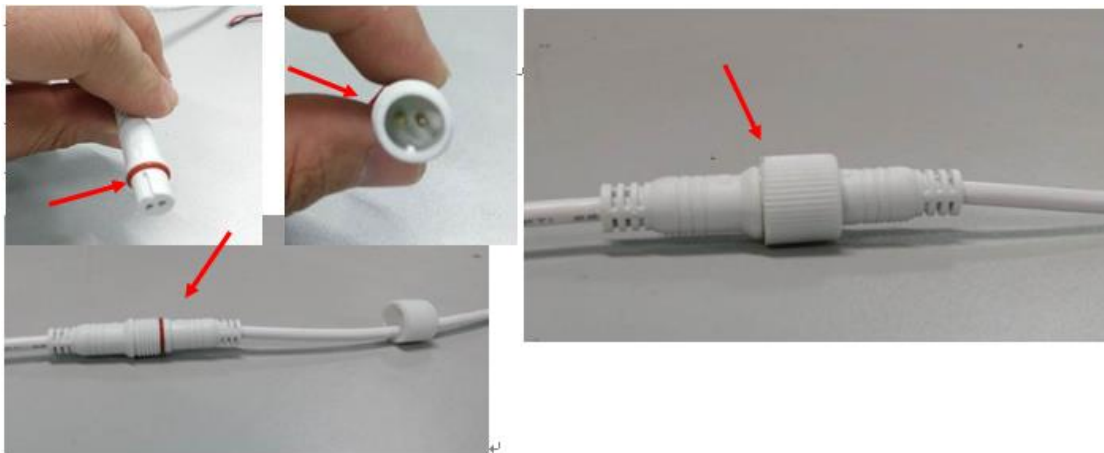
磁铁安装方式:

① 确保安装面是铁或其他可以跟磁铁吸附的材质. 如图1所示。

② 将公母对插线对插到位, 然后扭紧中间螺母. 把灯具安装到位即可如图2所示。



Picture 1



Picture 2

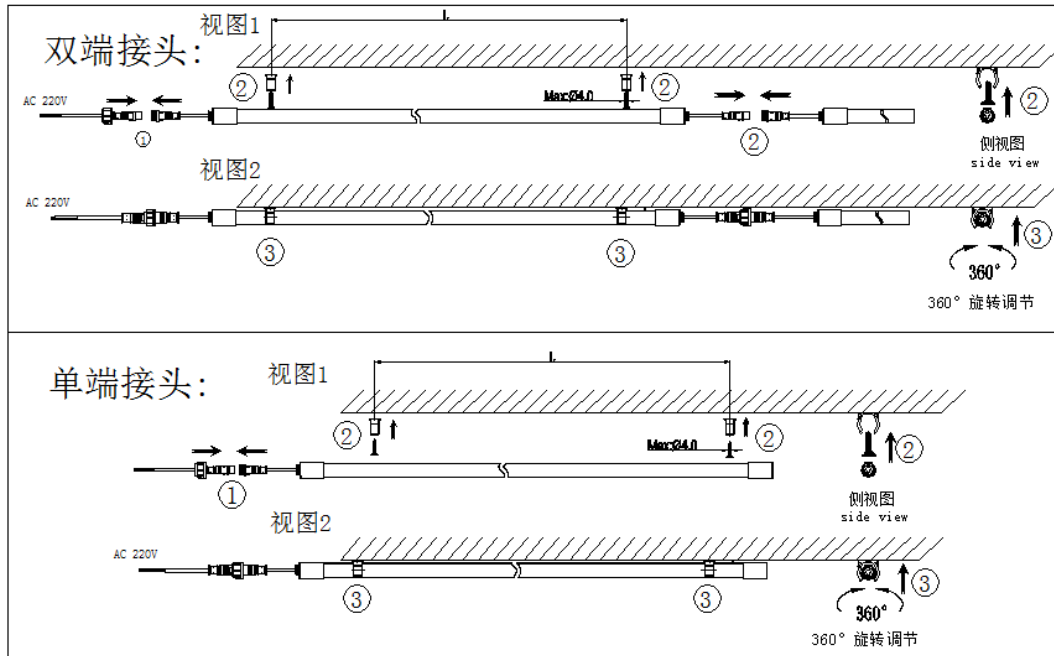
## 2. Screw Mounting

1. Drill screw holes accordingly and tighten the plastic clip like picture 1
2. Plug the male connector; tighten the nut like picture 2 shows.

螺丝安装方式:

①在设备的钣金上开两个螺丝孔，用螺丝把塑胶灯夹扭紧固定住。灯夹间距见附表，如图1所示。

②将公母对插线对插到位，然后扭紧中间螺母，再把灯具安装到灯夹位置即可，如图2所示。



附表:

规格	300S	600S	900S	1000S	1200S	1500S
安装长度 L	198	498	798	898	1098	1398

## Part 7: After-sales Service

Warranty is 18 months. If broken in natural within the warranty, please bring invoice and date in the light to repair free.

The following cases are not covered by the warranty, service charges paid by:

- (1) Altered fixture dates
- (2) The broken is because of improper use by user;
- (3) The body of light and bundled products is broken or lost can't warranty;
- (4) The broken reason is not natural, such broken by wrong input voltage and set up to lead to light can't work;
- (5) Dismantle and repair have not agree with factory, repair and alter by the other repair person not in authorized service station;
- (6) The broken is caused by fires, earthquakes, floods, lightning or other natural disasters, pollution and abnormal voltage.
- (7) Lights need to repair because rodents, salt spray, corrosion.

3、Exceed warranty period, repair will be charge fees as standard. Service charge = repair fees + material fees + freight fees.