



Product specification

Name : ONN-LED X08 series

Model : ONN-X08B

Date : 2016-1-30

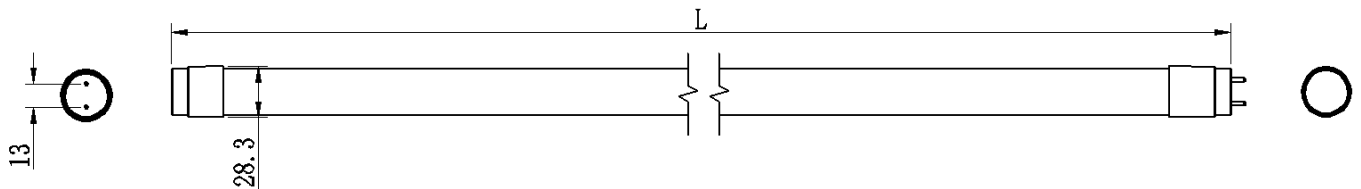
Version : A 0

Products introduce:

1. All plastic design can withstand 4000V high pressure, no glass broken unsafe risk;
2. Milky white diffused cover, light is soft and not dazzling ;
3. Both ends with the sealed water-proof design, protection level up to IP67
4. To replace the traditional T8 lamp, can adjust the light direction freely when mounting with clips . Completely solve the problem that traditional T5 lamp can not adjust view angle .

Application: wind screen cabinets, display cabinets, freezer stores, vertical freezer, refrigerator interior lighting.

Products photo and size photo:



L	589mm	820mm	1198mm	1498mm
---	-------	-------	--------	--------

Parameters:

单位: mm

Model No.	Input Voltage	Range of input voltage	Range of CCT
-----------	---------------	------------------------	--------------

ONN-X08B-C1	AC220V (50/60Hz)	AC180-240V (50/60Hz)	5500-6000K
ONN-X08B-C2	AC220V (50/60Hz)	AC180-240V (50/60Hz)	4000-4500K
ONN-X08B-C3	AC220V (50/60Hz)	AC180-240V (50/60Hz)	2800-3000K
Length of power line	0.15M		
Installation	By Clip		
Length	598mm	820mm	1198mm
Power	9W	14W	18W
Input Current	(220V)80mA	(220V)110mA	(220V)165mA
Luminous Flux	850 Lm	1150Lm	1600 Lm
IP rating	IP65	Range of CCT:	5500-6000K 4000-4500K 2800-3000K
Luminous efficiency	90-105Lm/W	CRI:	>80Ra
Drive	Non-isolation	PF:	0.5/0.9
Surface temperature	< 50°C	Beam angle:	130°
Life spans	50,000H		

Working temperature	-20~45°C
Storage temperature:	-40~70°C
Working humidity	10~90%
Save humidity:	10~90%

Packing:

Package material	Carton			
Size of products	598	820	1198	1498
N/W of one light	0.09	0.125	0.155	0.2
G/W of total carton	13.8	11	13.2	16.7
Qty in carton (PCS)	140	72	72	72
EPE (L*W*H) mm	200x150x35mm	200x150x35mm	200x150x35mm	200x150x35
Size of outer carton	1300*225*390mm	960*210*390mm	1300*225*390mm	1300*225*390mm

Installation

1) Install the plastic light clips in the equipment by $\Phi 4\text{MM}$ screw.

2) Push the tube to the clips and adjust it to the right angle and right position.

3) Put the waterproof rubber ring on connector A and then plug A into C, lock tightly.

4) Can adjust any angle.
Especially angle: 360° .

